



Now for Sale

Explorer Yacht Santa Maria T



€ 8.000.000 (incl. VAT)

Experience the ultimate luxury yacht - the Van der Valk 37 M Explorer "SANTA MARIA T"! with a length of 37 meters, it offers unparalleled comfort and exceptional performance. This motor yacht embodies elegance, style, and a spirit of adventure, ready to accompany you on unforgettable journeys across the world's oceans.

The "SANTA MARIA T" impresses with its timeless design and high-quality materials. The spacious interior provides generous living areas, a fully equipped kitchen, and luxurious cabins that can accommodate up to 10 guests. Every space is carefully crafted, offering first-class amenities to make your stay on board an unmatched experience.

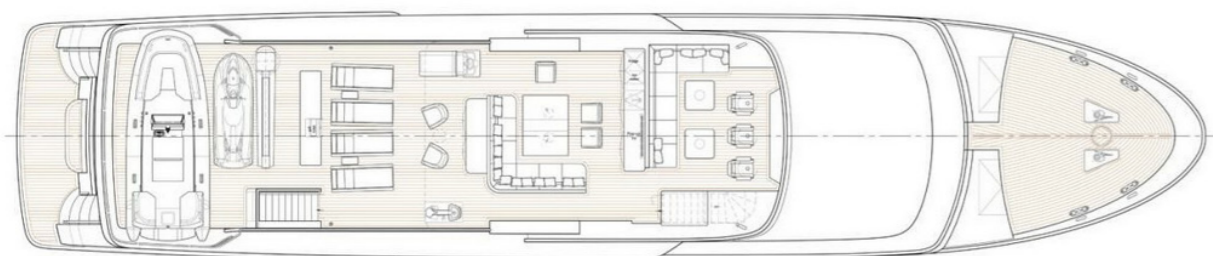
This motor yacht is equipped with state-of-the-art technology and propulsion systems, ensuring a smooth and comfortable ride. With an impressive range and excellent maneuverability, the "SANTA MARIA T" is ready to take you to the most remote places on Earth.

The upper deck offers breathtaking views of the sea and is perfect for relaxation and entertainment. The "SANTA MARIA T" also features a wide range of water sports equipment to add even more variety to your stay.

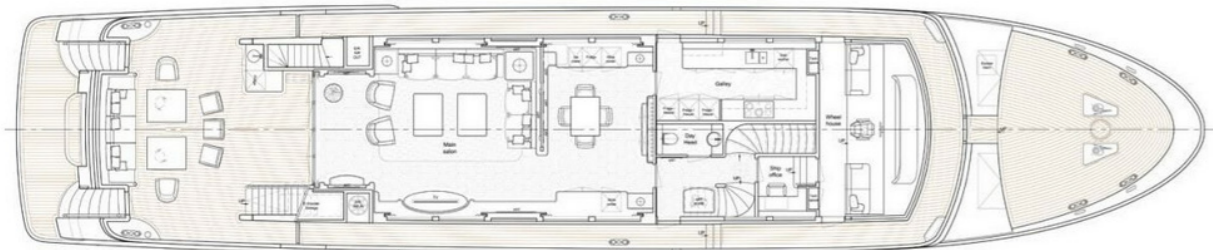
LOA	Top speed	Beam	Fuel tank	Displacement	Water tank
36.80m	14.6 knots	7.75m	33000l	320GT	6000l



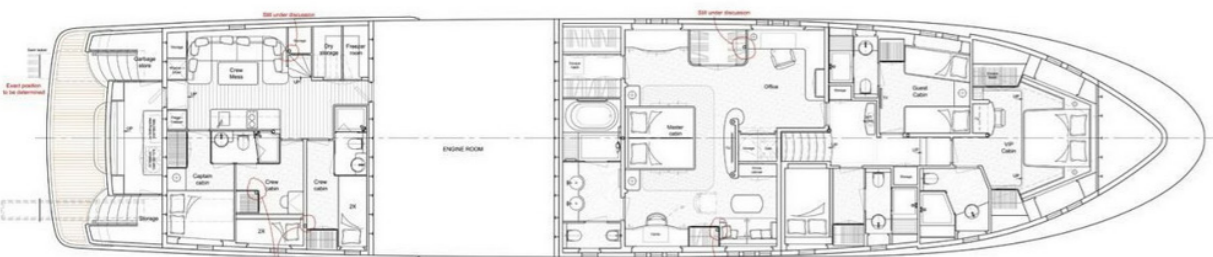
Sideview Santa Maria T



Top Deck Layout Santa Maria T



Main Deck Layout Santa Maria T



Lower Deck Layout Santa Maria T

NAUTICON

Specifications

Year 2015	Superstructure material Aluminium (AlMg4.5Mn - H321)
Hull no. WV0106	Hull Shape Round bilge - Full displacement
LWL 34.50m	Classifications Lloyd's 100A1 SSC Yacht Mono G6 (hull)
Draft 2.30m	Engine brand & type 2x Volvo Penta D16-MH 16.0l 6cyl.
Displacement 320GT	Cruising speed 11.2
Hull material Steel grade A	Shaft & Propeller Stainless steel duplex Ø=90mm, Veemstar 5-bladed propellers Ø49"
Gearbox Twin Disc MGX 5170 DC, reduction 3.54.1	Cabins 1 owner, 1 VIP, 1 twin guest, 1 queen bunk guest, 4 bathrooms
Bow/stern Thruster 60hp hydraulic proportional bow and stern thruster	Crew 6 person crew, 3 cabins
Generators 2x 55kW Nothern Lights M1064T2 23/400V	Naval architect Ginton Naval Architects
Holding tank capacity 6000L	Design & Styling Guido de Groot Design



NAUTICON

Interior design

Santa Maria T's interior is embodied by a striking art-nouveau style, her main saloon is nothing short of thrilling with mahogany woodwork enhanced by Pacific madrona burl inlays. Solid herringbone floorings, embossed alcantara panelling on walls and ceilings, indirect lighting, and perfectly matching artwork complete the stunning interiors. Linked to her main saloon is her spacious aft deck reachable via stainless steel doors. Here is an 8 person seating area with a small pantry with a sink and refrigerator. Santa Maria T boasts a considerable engine room.

The two Volvo Penta D16 MH 651 hp engines can be walked around. The D16 engines come with a rating 1 continuous duty certificate, meaning they can perform 24/7 without a single stop/reduction. Santa Maria T is the first yacht in the world delivered with an all-new two-axis fin antiroll damping system that provides stabilization both underway and at zero speed without compromising performance in either circumstance. More information can be found in the Information and Amenities.

